



SACRUM IN HOSPITAL COMPLEXES – THE CASE OF STUMMER'S HOSPITAL IN TOPOL'ČANY

Katarína Kristiánová

ÚUÚP- Institute of Urban Design and Urban Planning,

CeKA – Centre for Landscape Architecture

Faculty of Architecture Slovak University of Technology in Bratislava
Slovakia

Research supported by the Ministry of Culture of the Slovak Republic
within the Project KEGA 016STU-4/2017 Interdisciplinary approaches to
the protection of cultural and natural heritage, in collaboration of Slovak
University of Technology in Bratislava, Comenius University in Bratislava
and Trnava University



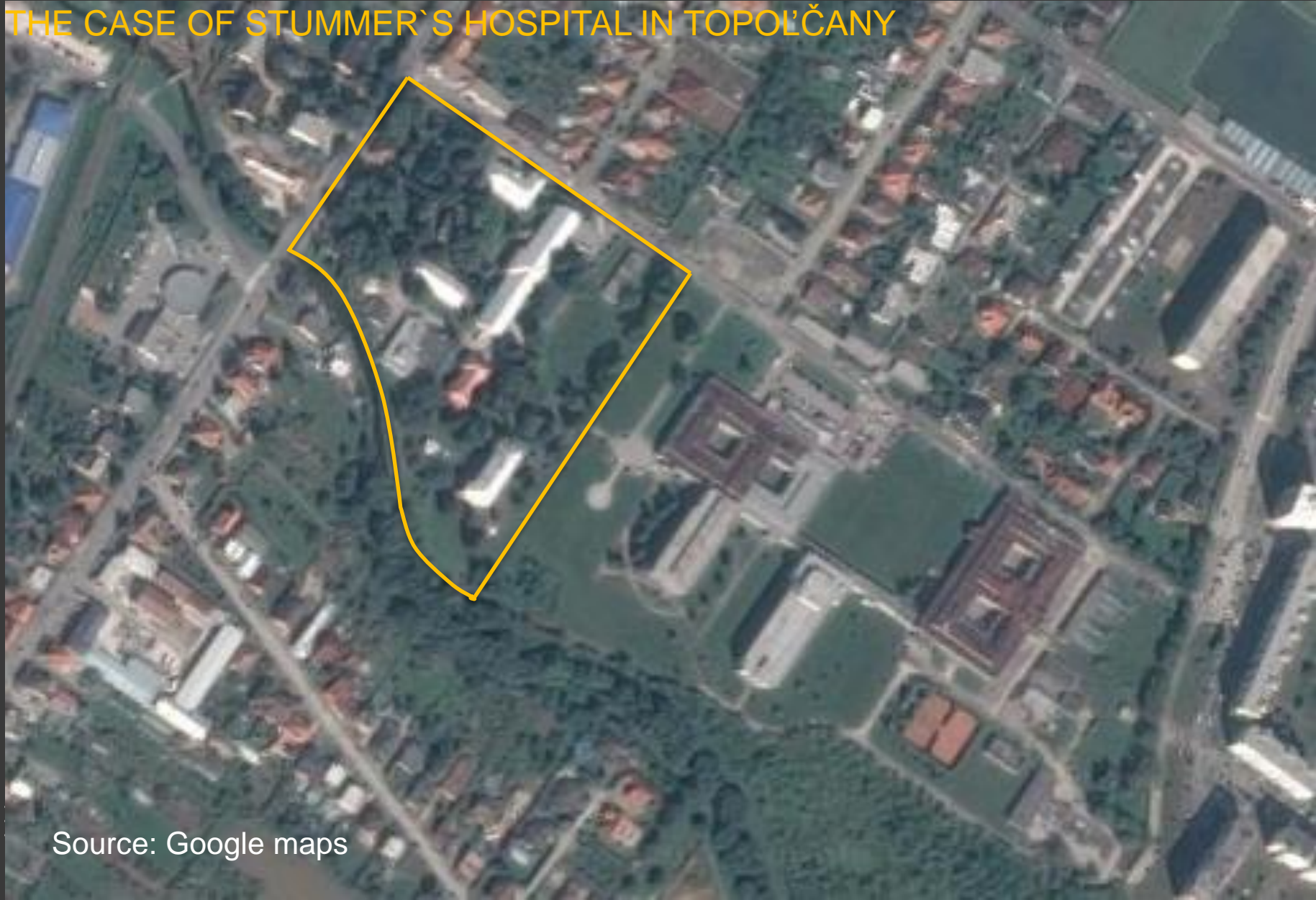
SACRUM IN HOSPITAL SETTING

Sacred spaces in hospital setting give patients and families spiritual support, help them to connect with faith resources. They serve for meditation, for stress relief.

Sacred spaces in hospital setting include chapels, meditation places, all faith chapels,
gardens, healing gardens,
mortuaries, bereavement rooms.



THE CASE OF STUMMER'S HOSPITAL IN TOPOĽČANY



Source: Google maps



THE CASE OF STUMMER'S HOSPITAL IN TOPOĽČANY

The Stummer's hospital in Topoľčany was established by baron August Stummer (*1827 – † 1909) in 1885.

The original campus from the year 1885 on the area of 1700 square meters was created by four buildings forming a rectangular courtyard with a fountain in the middle, surrounded by circular communication connecting the buildings. The area outside the courtyard was maintained as park, for relax and healing purposes.

The hospital campus is listed on the List of Cultural Monuments of Slovakia and consists of: hospital main building, chapel, fence wall, service building, infection pavilion and park.

Analysis of the old hospital area by K. Janošková, O. Lemak, supervisor K. Kristianova. Source: Archive of CeKA FA STU





ANALYSIS OF THE ELEMENTS OF SACRUM IN ARCHITECTURE AND LANDSCAPE ARCHITECTURE OF STUMMER'S HOSPITAL

The chapel on
historical
photograph from
the 30s of the
20th century.
Source: Archive
of the Monuments
Board of the
Slovak Republic





ANALYSIS OF THE ELEMENTS OF SACRUM IN ARCHITECTURE AND LANDSCAPE ARCHITECTURE OF STUMMER'S HOSPITAL

The chapel today.
Source: Archive
of the Monuments
Board of the
Slovak Republic





Source: Photograph by Matej Kováč



ANALYSIS OF THE ELEMENTS OF SACRUM IN ARCHITECTURE AND LANDSCAPE ARCHITECTURE OF STUMMER'S HOSPITAL

The concept of
sacred trees – the
evergreen tree
allée leading from
the main entrance
to the chapel.
Source: Photo by
Katarina
Kristianova





Source: Photo by Katarina Kristianova



ANALYSIS OF THE ELEMENTS OF SACRUM IN ARCHITECTURE AND LANDSCAPE ARCHITECTURE OF STUMMER'S HOSPITAL

The fountain as in
the middle tree
allée leading from
the main entrance
to the chapel –
water as life
symbol, symbol of
relationship with
god, symbol of
renewal ,
purification.

Source: Archive
of the Monuments
Board of the
Slovak Republic





Source: Photograph by Matej Kováč

ANALYSIS OF THE
ELEMENTS OF SACRUM IN
ARCHITECTURE AND
LANDSCAPE
ARCHITECTURE OF
STUMMER'S HOSPITAL

The tree of life
on the door to the
chapel. Source:
Photo by Katarina
Kristianova





Source: Photo by Katarina Kristianova



DISCUSSION

THE WAYS TO PRESERVE THE SACRUM IN THE REDEVELOPMENT, REVITALIZATION , AND NEW USE OF THE HOSPITAL AREA

Research supported by the Ministry of Culture of the Slovak Republic
within the Project KEGA 016STU-4/2017 Interdisciplinary approaches to the
protection of cultural and natural heritage, in collaboration of Slovak
University of Technology in Bratislava, Comenius University in Bratislava and
Trnava University



THANK YOU FOR ATTENTION